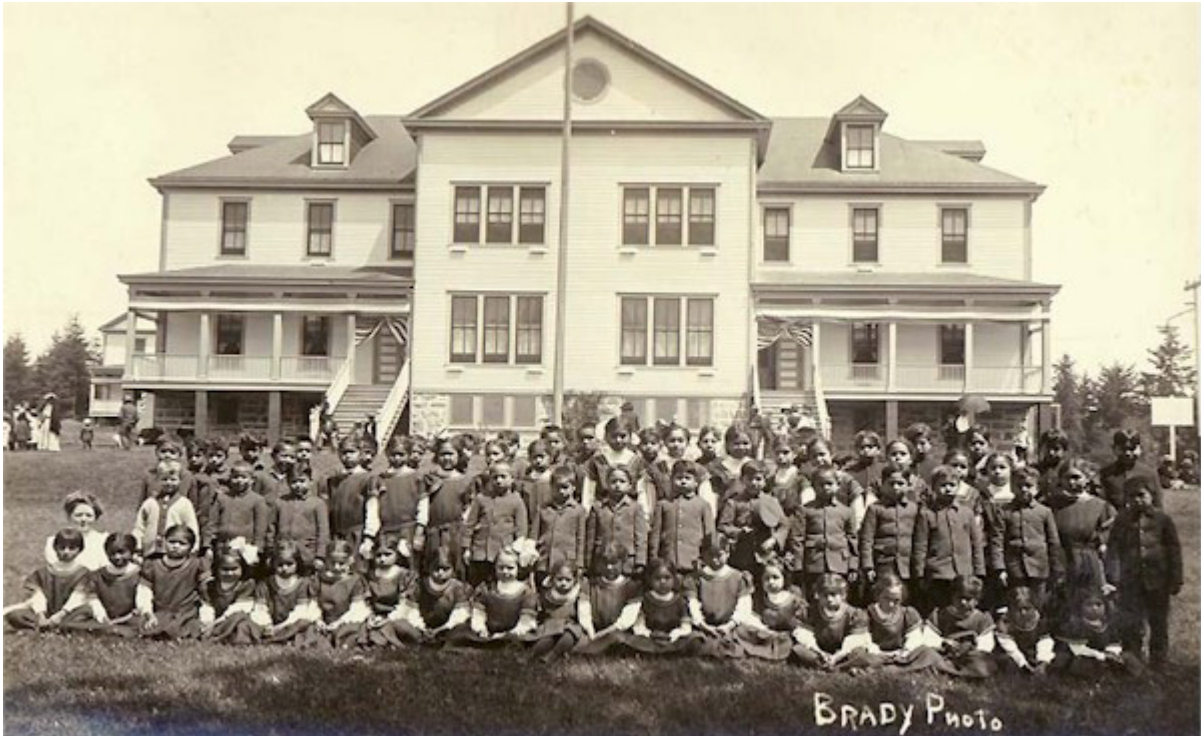


boarding school



school with buildings where the students live during the school term

During the 1900's, many Native American children were sent to live and study at government **boarding schools**.

dormitory



a building with many rooms in which people sleep

All the boys lived in one large house or dormitory.

endurance



power to last and to withstand
hard wear

Farm work is difficult and requires
endurance.

manual



done with the hands

In the boarding schools, children had to do **manual** labor, such as growing crops, making bread, and making wagons.

reservation



land set aside by the government for a special purpose

Navajo Indians lived in huts called hogans on a **reservation** in Utah and Arizona.

society



the people of any particular time or place

Children learn to become productive members of **society** by following examples of the adults around them.